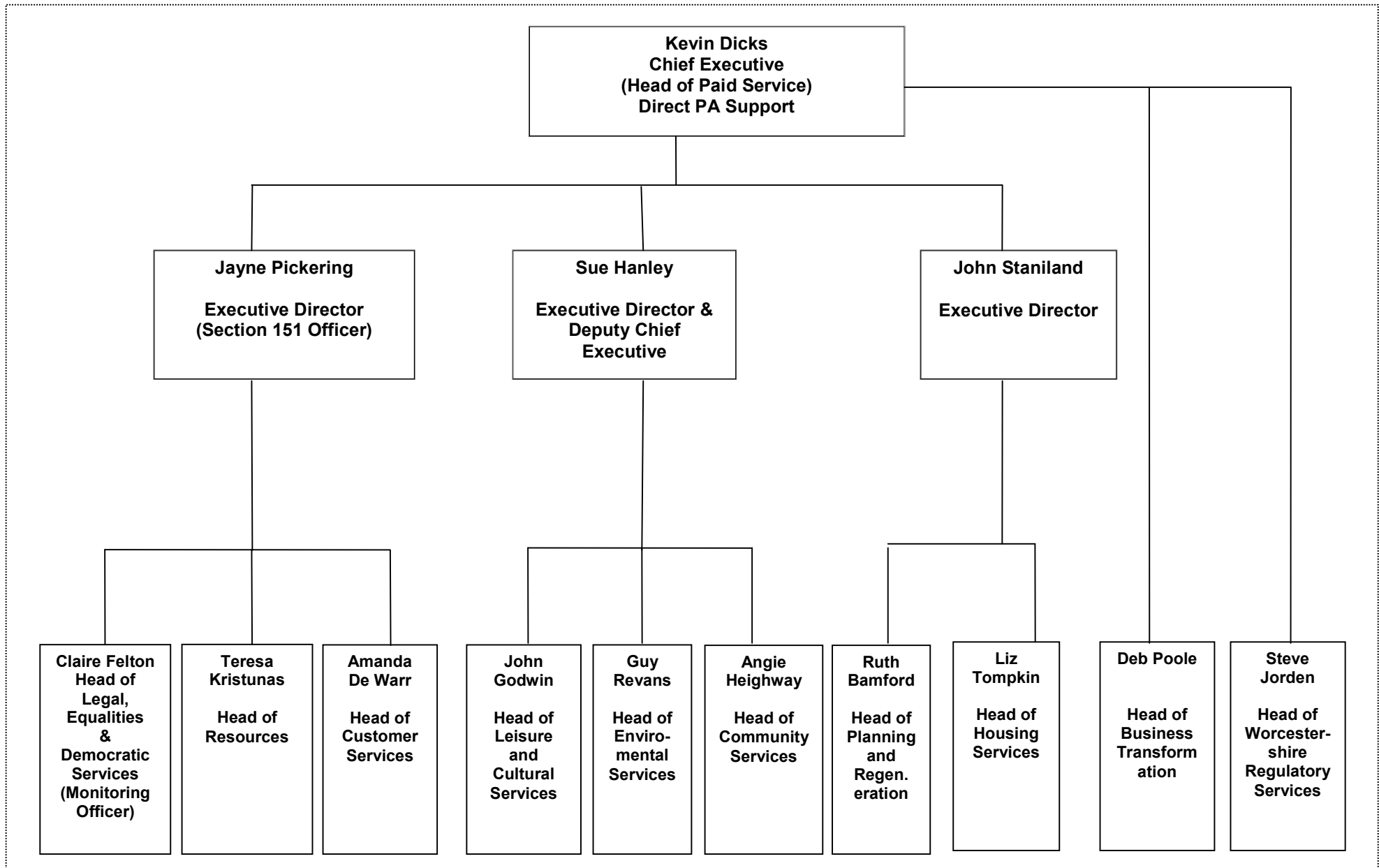


# Redditch Borough Council and Bromsgrove District Council Single Management Structure - May 2012



**Kevin Dicks,  
Chief Executive**

- LSP & Other Strategic Partnerships
- Communications, Marketing and Promotion (including oversight of web content)
- Printing & Reprographics
- Civic Support
- Corporate Administration/ Central Post Opening

**Deb Poole  
Head of Business  
Transformation**

- I.C.T.
- Business Development
- E Government
- Web Development
- Land and Property Gazetteer / GIS / Street Naming and Numbering
- Transformation, Business Process Re-engineering and Lean Systems
- Information Management
- Freedom of Information, Data Protection, Records Management
- Organisational Development (including Workforce Planning and Succession Planning)
- Training & Development (strategy)
- Performance Management & Improvement
- Policy (excluding service specific strategy)
- Consultation & Community Engagement
- Customer Insight

**Jayne Pickering  
EXECUTIVE DIRECTOR**

**Claire Felton  
Head of Legal, Equalities &  
Democratic Services**

- Election & Electoral Services, Periodic Electoral Review
- Democratic Services & Member Support
- Member Development
- Professional Legal Advice & Services
- Monitoring Officer Role, Probity & Standards
- Governance
- Advice to Parishes
- Equalities & Diversity

**Teresa Kristunas  
Head of Resources**

- Accounts & Financial Management & Advice
- Corporate Income & Debt Management
- Procurement
- Revenues & Benefits
- Audit
- Risk Management
- Payroll
- Property, Assets & Facilities Management (including Caretakers)
- Human Resources & Welfare
- Training & Development (Day to day)
- Health & Safety

**Amanda de Warr  
Head of  
Customer Services**

- Customer Service Centres
- Complaints and Customer Feedback
- Customer Service Strategy
- One Stop Shops
- Cashiers
- Reception Services
- Switchboard Services
- Worcestershire Hub

**SUE HANLEY**  
**EXECUTIVE DIRECTOR & DEPUTY CHIEF EXECUTIVE**

<b>John Godwin Head of Leisure and Cultural Services</b>
<ul style="list-style-type: none"><li>• Leisure/Sports Centres/Dual Use Facilities</li><li>• Sports and Recreation Development</li><li>• Arts Development</li><li>• Children &amp; Young People, Play</li><li>• Health Education/Interventions</li><li>• Parks and Open Spaces</li><li>• Allotments</li><li>• Museum</li><li>• Events</li><li>• Community Centres</li><li>• Theatre</li><li>• Countryside Centre</li><li>• Sponsorship</li></ul>

<b>Guy Revans Head of Environmental Services</b>
<ul style="list-style-type: none"><li>• Waste Management</li><li>• Street Scene / Street Cleansing</li><li>• Grounds Maintenance/ Landscaping</li><li>• Bereavement Services</li><li>• Climate Change / Energy Efficiency</li><li>• Public Conveniences</li><li>• Cesspools/Sewers</li><li>• Engineering and Design</li><li>• Minor Works Team</li><li>• Abandoned Vehicles</li><li>• Street Naming and Numbering (operational)</li><li>• Tree management inc TPOs</li><li>• Land Drainage</li><li>• Car Parks/Civil Parking Enforcement</li></ul>

<b>Angie Heighway Head of Community Services</b>
<ul style="list-style-type: none"><li>• Community Cohesion (Older and Young People) / Social Inclusion</li><li>• Community Safety</li><li>• Anti Social Behaviour Team</li><li>• CCTV &amp; Lifeline Operation &amp; Development</li><li>• Voluntary Sector &amp; Community Networks, Grant Aid</li><li>• Transport</li><li>• Community Transport / Dial A Ride</li><li>• Bus Passes / Concessionary Fares</li><li>• Grant Aid</li><li>• Housing Strategy and Enabling</li><li>• Private Sector Housing</li><li>• Disabled Facilities Grants</li><li>• Travellers</li><li>• Shopmobility</li><li>• Children's Centres</li></ul>

**JOHN STANILAND  
EXECUTIVE DIRECTOR**

**Head of Regulatory  
Services**

- Health & safety
- Food Safety
- Food Standards
- Licenses (all)
- Pest & Dog Control
- Animal Health and Welfare
- Contaminated land
- Fair Trading
- Consumer and Business Advice
- Air Quality
- Metrology
- Product Safety
- Rogue Trading and Counterfeiting
- Underage Sales
- Statutory Nuisances
- Infectious Diseases

**Ruth Bamford  
Head of Planning and  
Regeneration**

- Strategic Planning (Planning & Local Development Framework)
- Development Management (including Planning Enforcement)
- Building Control
- Land Charges
- Emergency Planning / Business Continuity
- Conservation
- Economic Development

**Liz Tompkin  
Head of Housing**

- Capital Improvements
- Repairs & Maintenance
- Homelessness
- Housing Options/Choice Based Lettings
- Housing Performance and Database
- Right to Buy
- St David's House Extra Care Housing
- Tenancy Management